

The background of the entire image is a dense, close-up photograph of various green leaves. The leaves are in different shades of green, from light lime to deep forest green, and have different shapes and textures, some with serrated edges and prominent veins. The lighting is soft, creating a natural and vibrant atmosphere.

Forestami

**Let's plant 3 million trees together
and increase Natural Capital
in the Metropolitan City of Milan by 2030**

The background of the slide is a dense, close-up photograph of various green leaves, likely from a tree or shrub, filling the entire frame. The leaves are in different shades of green, from light to dark, and have serrated edges. The lighting is natural, creating soft shadows and highlights on the leaf surfaces.

1. The project

2. How to support the project



1. The project

The project

Planting 3 million trees in the Metropolitan City of Milan—multiplying the number of trees along streets, squares, and courtyards, on rooftops and the facades of our homes—is the most effective, cost-effective, and engaging way to slow global warming, reduce energy consumption, cleanse the air we breathe of fine particles, and improve the well-being of citizens.

Forestarimi is a project that aims to engage all citizens who live and love the Metropolitan City of Milan in mitigating the effects of climate change. Individuals, public entities, associations, and private companies: together to contribute with actions that have a positive impact on their future and that of generations to come.

«La forestazione urbana sostenibile è uno degli strumenti più importanti su cui sempre più città si stanno impegnando per consentire lo sviluppo di metropoli più verdi, in salute e più resilienti. È, infatti, risaputo come alberi e foreste incidano in maniera benefica sulla salute e sul benessere delle persone, sul mitigare il cambiamento climatico e nella riduzione dei rischi dovute a disastri ambientali».

Maria Chiara Pastore,
Direttrice scientifica Forestami

The project

This project, born from **research by the Polytechnic University of Milan's Department of Architecture and Urban Studies**, aims to engage everyone—citizens, local communities, institutions, associations, and businesses—in the responsibility of mitigating climate change through the growth of natural capital (planting 3 million new trees by 2030), thus contributing to improving the air quality of the metropolitan city of Milan.

To support the implementation of Forestami, the Forestami Solidarity Fund was established at the end of 2019, at the initiative of the City of Milan at the Fondazione di Comunità Milano. The Fund aims to pool resources from private companies and citizens and encourage public-private partnerships to understand, plan, maintain, and enhance the natural capital of the metropolitan city of Milan.

<https://forestami.org/ricerca-scientifica/>

The project

Over the years, Forestami has developed a strategic vision for the role of nature in the Milan metropolitan area, involving citizens, organizations, associations, and businesses. From April 1, 2025, the Forestami project will become an independent reference body, a philanthropic player advocating for urban forestry, including at the national level. Hence the need to establish a joint foundation under the name of Fondazione Forestami.

From April 1, 2025, Fondazione Forestami will take over the management of Forestami projects from Fondazione di Comunità Milano and all existing relationships related to them. Thanking Fondazione di Comunità Milano for its intense work.

The logo for Fondazione Forestami is displayed on a light orange rectangular background. It consists of the word "Fondazione" in a green, spaced-out, sans-serif font, positioned above the word "Forestami" in a larger, bold, green, sans-serif font. The letter "F" in "Forestami" is stylized with a circular cutout.

Three pillars

To address the complexity of contemporary environmental challenges and establish common strategies and objectives for all municipalities in the Metropolitan City of Milan, Forestami is structured around three main pillars:

RESEARCH

TERRITORIAL ENGAGEMENT, PLANTING, AND MONITORING

DISSEMINATION AND ACTIVE INVOLVEMENT

Research

The aim of the research is to guide forestry projects and policies, while identifying priority areas for intervention and new themes for development.

- Study of territorial environmental conditions
- Analysis of tree cover, urban heat islands, and stormwater runoff
- Greenery and health: distribution and composition of urban green spaces
- Accessibility map for equitable distribution of green spaces
- Fitoremedio
- Territorial platform
- Publications and conferences

<https://forestami.org/en/mappatura/>

Superficie permeabile e impermeabile (2017)

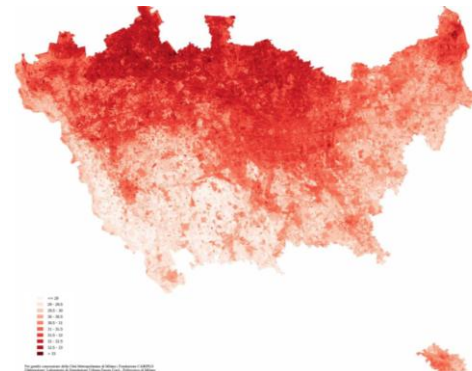
40,5%
di CMM è
territorio
urbanizzato



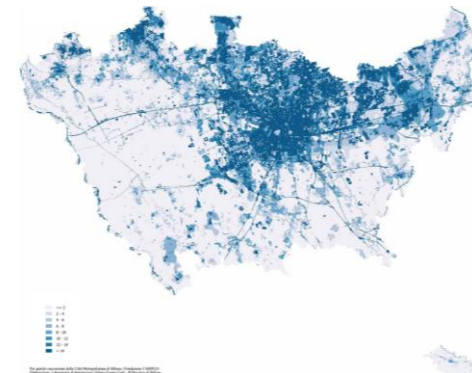
Il coefficiente della superficie permeabile e impermeabile è stato calcolato sulla base del DBT. La mole di dati è enorme e il calcolo richiede del tempo. Il dato che ne risulterà sarà più raffinato di quello del DUSAF, salvo updates più recenti.

Elaborazione: Laboratorio simulazione urbana Fausto Cori - Politecnico di Milano - DBT CMM 2012

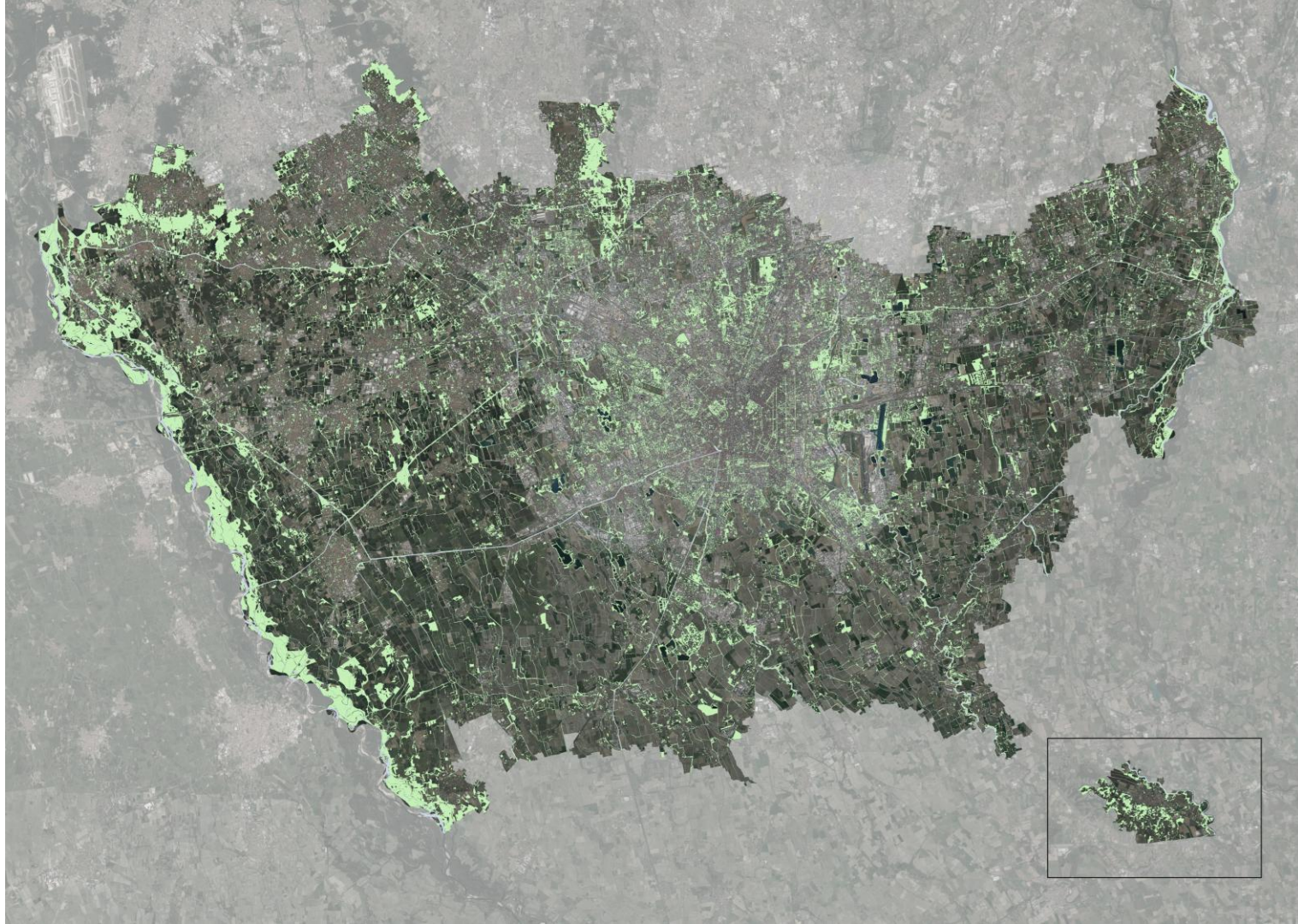
Isola di calore (2017)



Deflusso acque (2017)



16%
Tree
canopy
cover
(2018)



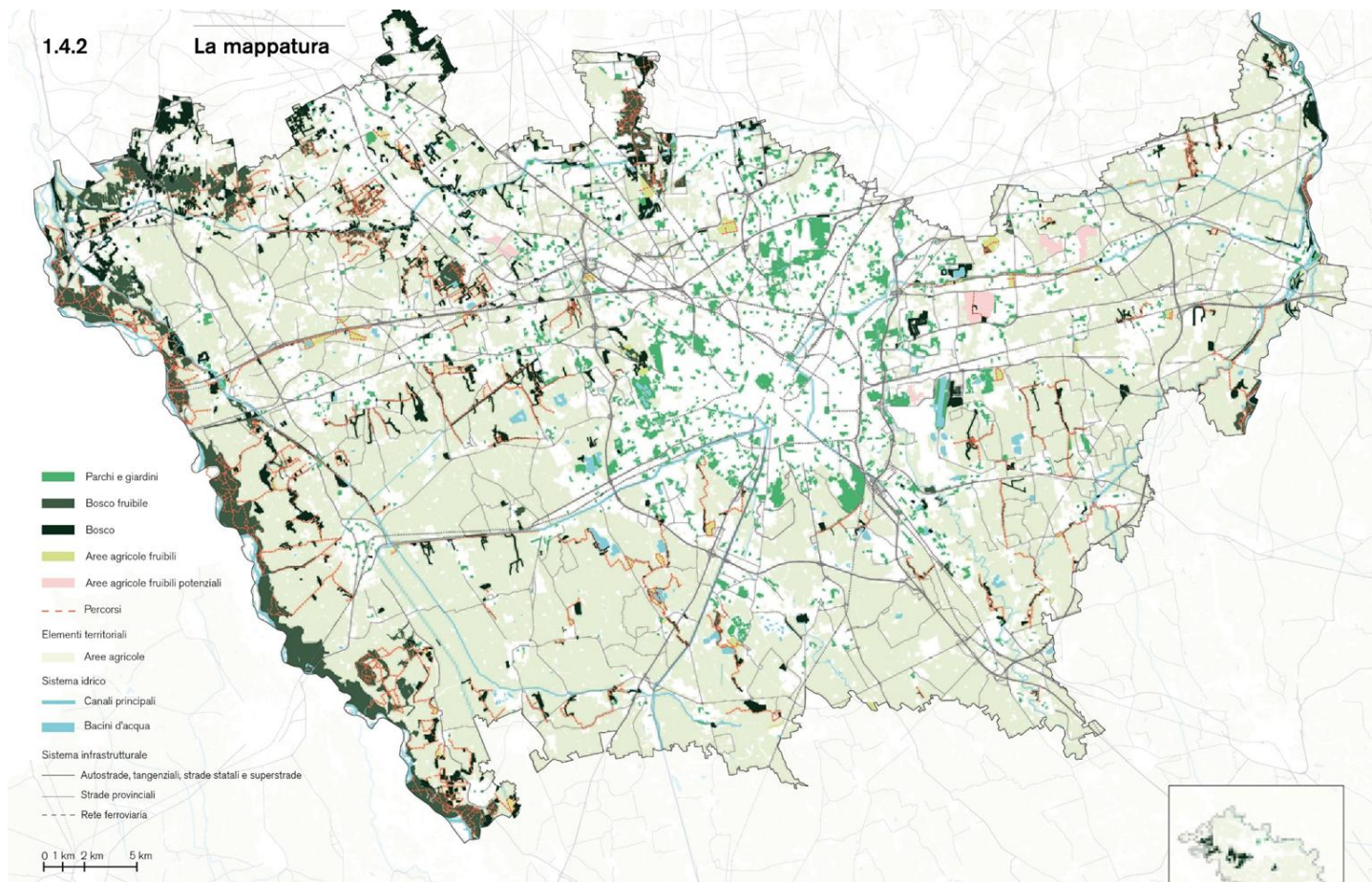
Elaborazione: Laboratorio di
Simulazione Urbana Fausto
Curti, 2018

Forestami

Green and health

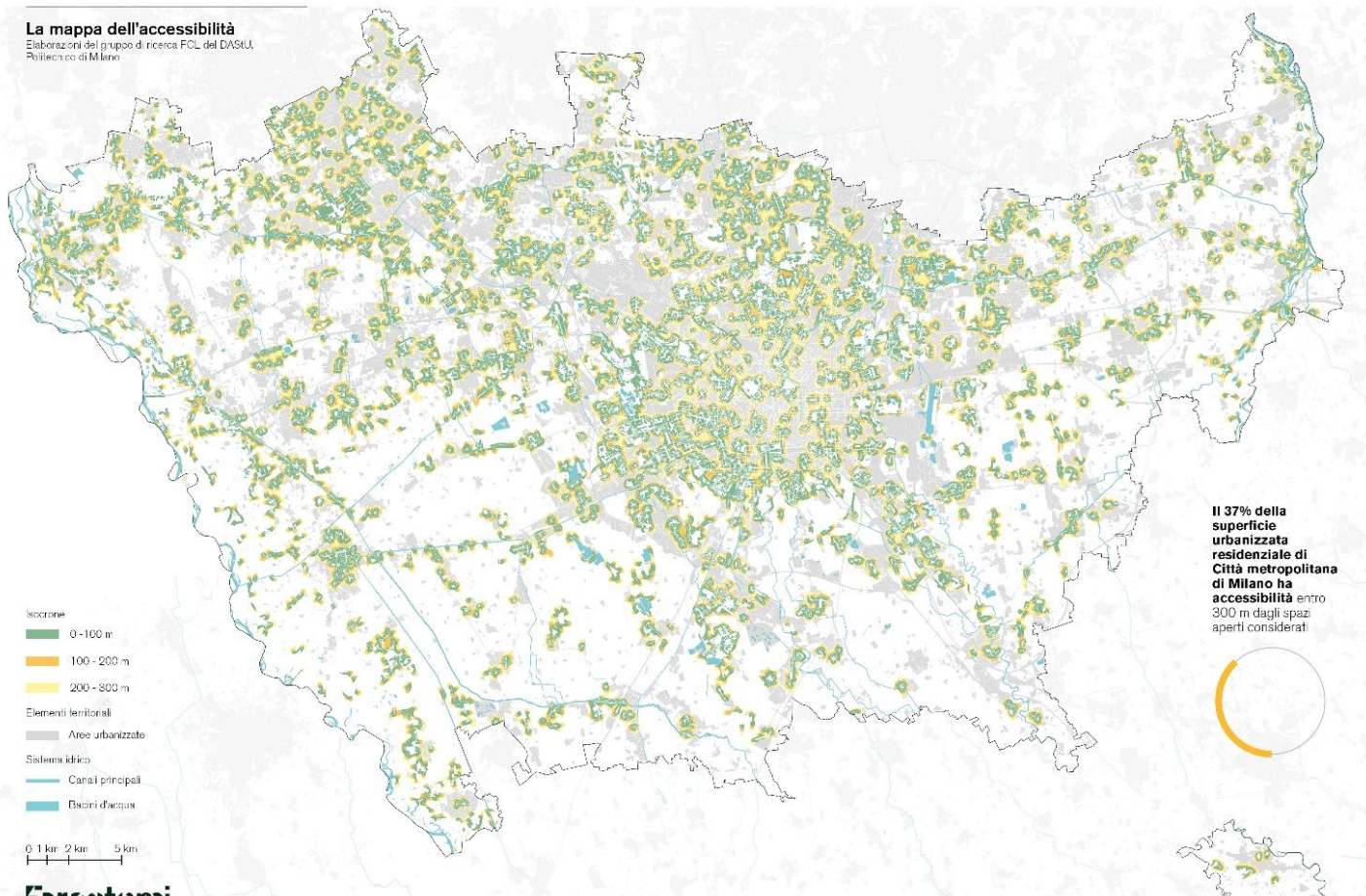
Distribuzione degli spazi verdi urbani che concorrono al benessere delle persone

Caratteristiche:
Spazi aperti > 5.000 m²
Spazi aperti attrezzati e fruibili
Tree Canopy > 20%



Mappa dell'accessibilità

Il 37% della superficie urbanizzata residenziale di CMM ha accessibilità entro 300 m dagli spazi aperti considerati



Fitorimedia

è una tecnica di risanamento del suolo tramite l'utilizzo delle piante

Tecnica tradizionale di bonifica:

PROs

- **Timeframe** allowing a return to use in a short time
- **Certainty** of results

CONs

- **High environmental impact;**
- **High costs ;**

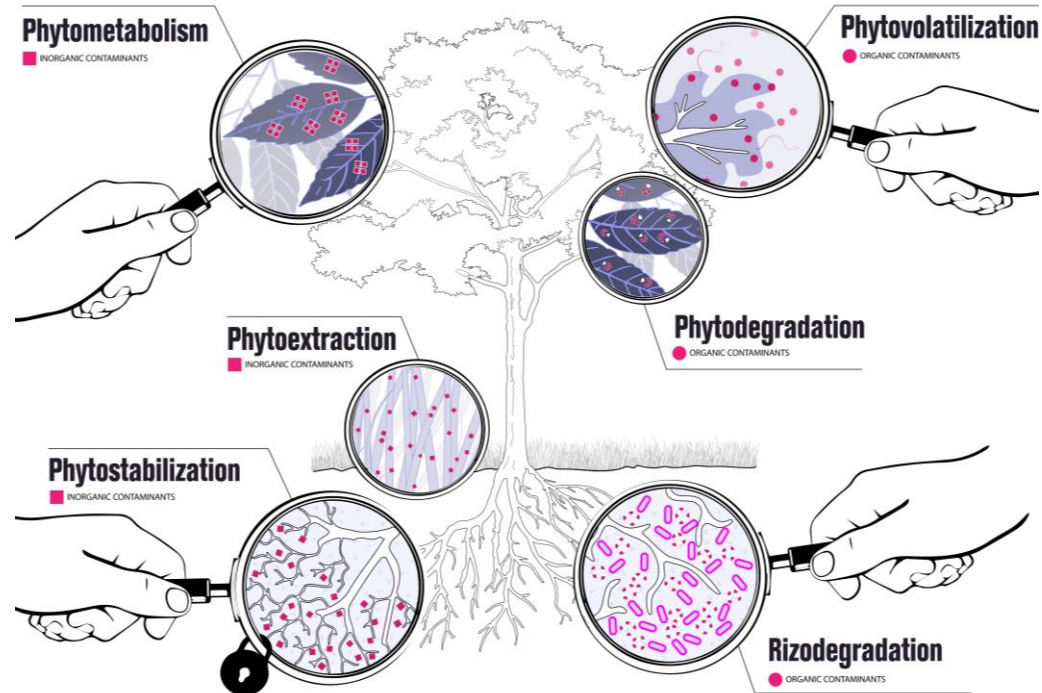
Fitotecnologia:

PROs

- **Low environmental impact;**
- **Contained cost** compared to ex-situ or chemical-physical matrices decontamination;
- Form of **ri-naturalization of the sites;**
- **Ecosystem services** carried out by plants

CONs

- **Timeframe** not allowing a return to use in a short time;
- **Uncertainty** (depending on the type of pollutants to be reduced);
- **Project maintenance**



Local engagement, plantations, and monitoring

The local investigation and engagement are aimed at creating space for increasing the natural capital of the CMM

- Involvement and targeted meetings with municipalities
- Memorandums of Understanding with municipalities
- Planning, implementation, and maintenance of interventions (social cooperatives)
- Monitoring the health of Forestami plantations
- Synergistic projects
- Scientific monitoring in collaboration with other research groups
- Territorial platform
- Supporting urban forests towards adulthood and their management

Urban forestry interventions - forestami.org/le-piantagioni/

Noviglio, SP203 (primavera 2022)



Bollate, via Berlinguer (autunno 2023)



Inveruno, via Cavour (primavera 2023)



Dissemination and Active Involvement

Activities focus on spreading the benefits of urban forestry, encouraging citizen participation in the CMM and promoting the active involvement of all local stakeholders.

- Private fundraising from businesses and citizens
- Citizen participation and involvement
- Collective plantings
- Website and social media
- Forestry School
- Forum
- Custodiscimi
- Pilot projects for local engagement and activation

Dissemination and Active Involvement

Forestami a project with environmental but also educational and cultural purposes

Scuola Forestami - Forestami School aims to engage students of all levels with content and projects that combine knowledge, sharing, and action. This project is designed for the generations who will hold the future of the planet and our land in their hands, contributing with their thoughts, behaviors, and actions to environmental protection. Numerous initiatives and schools are involved, and new activities and new members join every year.



Dissemination and Active Involvement

Forestami Academy is an opportunity for meeting, sharing, and learning, with the aim of disseminating the principles, values, and scientific basis of urban forestry. It is aimed at citizens who love greenery and wish to increase their knowledge in this field.

Thematic forums – open to the public and featuring international experts and scholars; they address topics related to urban forestry.



Dissemination and Active Involvement

Guardians of Urban Greenery - Theoretical and practical training sessions to learn how to care for domestic and urban greenery.

Collective plantations: citizens are directly involved during the growing season in the planting of new forest seedlings, alongside the social cooperatives that, together with Forestami, carry out the interventions.

<https://forestami.org/piantagioni-collettive-2024-2025/>



Dissemination and Active Involvement

Custodiscimi is a joint initiative by Forestami, Ersaf, and Legambiente Lombardia, aiming to engage citizens in the care and growth of the greenery of the future within the Municipalities of the City of Milan and the Municipalities of the Metropolitan City. The project involves the custody of a forest sapling on World Forest Day, celebrated annually on March 21st. It is then transplanted, cared for, and maintained for a period of approximately eight months. It is then returned to Forestami in the fall, where it can be planted and used to create new urban forests. Custodiscimi is now in its third year and has involved approximately 2,500 citizens each year in caring for forest saplings.





2. How to support Forestami

Donors

Forestami is a participatory and inclusive project where everyone's support is valuable: citizens, public and private companies, small, medium, and large, startups, and institutions can donate to financially support the project.

Forestarimi can only be achieved with everyone's participation and contribution.

Become a supporter

with a donation of €5,000 to €25,000

Become a partner

with a donation of €25,000 to €250,000, through project membership agreements.

- Use of institutional images of the Project and the **Forestami Sostenitore 2026 logo**, with the option of citing participation in the Project in institutional and CSR communications.
- Option to request, at your own expense, a calculation of the regulating ecosystem services generated by the supported forestry project.
- Presence on Forestami's website and social media channels, with the possibility of a space to provide evidence of one's own CSR activities and initiatives connected to the project,

